



VWR International LLC

Laboratory Business & Distribution
Europe

Self Assessment





Contents

1. PURPOSE	3
2. INTRODUCTION	4
3. ORGANIZATION.....	5
3.1. Headquarters.....	5
3.2. VWR Offices - Europe.....	5
4. ORGANIZATION CHARTS	6
4.1. Executive Organization	6
4.2. Americas.....	7
4.3. EMEA - APAC.....	8
5. QUALITY SYSTEM.....	10
5.1. List of Certifications - Europe	10
5.2. European Quality, Environmental, Health, Safety & Security Policy	13
5.3. European Structure - QEHSS & Quality Assurance	14
5.4. Quality, Environmental, Health, Safety Management	15
6. PRIVATE LABEL CHEMICALS MANUFACTURING	16
6.1. Private Label Chemical Manufacturing Quality System	16
6.2. Packaging / Labelling System	17
6.3. Materials Control System	17
6.4. Other.....	18
6.5. Personnel / Training.....	18
6.6. Facility / Utilities	19
6.7. Equipment / Instruments	20
6.8. Materials Control.....	21
6.9. Production / Process Control	22
7. SOCIAL INFORMATION.....	23
8. E-COMMERCE	24
8.1. Global website features	24
8.2. Advantages of Web Ordering.....	24
9. LOGISTICS.....	26
9.1. Package Labelling.....	26
9.2. Plant – Overview.....	27
9.3. European Distribution Network.....	28
9.4. Standard Lead Time (Local Distribution Centers) - in hours	29
9.5. Logistics Network Structure	30
9.6. Freight and Billing Options	30
APPENDIX (I) – VWR Offices EU	31

1. PURPOSE

Dear Valued Customer,

You have requested **VWR International** to complete and return a questionnaire about our Quality and/or Environment and Health and Safety management system. As you might understand, VWR regularly receives an increasing amount of similar requests.

In an effort to confirm our adherence to the general principles of International Quality, Environment and Health & Safety Standards, without unnecessarily slowing down the collation process with specific details on each of these forms, VWR's policy is to submit this '**Self Assessment**' document in response to such requests.

You are kindly invited to refer to the enclosed document, where you would find answers to frequently requested information.

If you have any further questions regarding VWR's Quality, Environment and Health & Safety management system, please feel free to contact the respective country Quality Manager.

Yours faithfully,
VWR International, Europe

Angélique Klootwijk
Director Quality Management & Quality Assurance

Raoul Biskupek
Vice President Global Chemical Manufacturing

2. INTRODUCTION

VWR (NASDAQ: VWR) headquartered in Radnor, Pennsylvania, USA, is a leading, global, independent provider of products, services and solutions to laboratory and production facilities.

With worldwide sales in excess of USD 4.3 billion in 2014, VWR enables science for customers in the pharmaceutical, biotechnology, industrial, education, government and healthcare industries. With more than 160 years of industry experience, VWR has cultivated a value proposition delivering product choice, operational excellence and differentiated services to improve our customers' productivity from research to production. VWR's differentiated services provide innovative, flexible and customized solutions from scientific research services to custom-manufactured chemical blends.

Our mission is to enable the advancement of science throughout the world.

We use process excellence to deliver what we promise to accelerate discovery, improve productivity for our customers and suppliers, and encourage innovation through collaboration.

We operate our businesses in over 25 different countries and under a wide range of competitive situations, subject to a variety of local laws, regulations and cultures.

As a leader in the global research laboratory industry, VWR operates according to recognized international quality standards and acts in compliance with all relevant legal requirements and regulations. This is driven by a central Quality, Environmental, Health & Safety team and a Regulatory Affairs team undertaking regular internal audits and continuous improvement initiatives. We also welcome every year several customers for predefined audits of our main premises.

An Integrated Management System (IMS) is setup within Europe to maintain the highest standards for customers and comply with national and/or international guidelines and standards, some of which are listed below

- VWR holds a single certification for quality management according **ISO 9001** across Europe since 2007
- VWR holds a single certification for environmental management system certification according **ISO 14001** since 2009
- VWR holds a single certification for occupational health & safety management according **OHSAS 18001** across Europe since 2011
- VWR became a **Sarbanes-Oxley (SOX)** compliant organization by 2006

To learn more about VWR and our approach to more sustainable business practices, please visit www.vwr.com

[Back to Contents](#)



3. ORGANIZATION

3.1. Headquarters

	North America	Europe	Asia
Company Name	VWR International LLC	VWR International Europe bvba	VWR International China Co., LTD
Postal Address	Radnor Corporate Center Building One Suite 200 100 Matsonford Road	Researchpark Haasrode 2020 Geldenaaksebaan 464	Room 219, 2100 Dongming Road Pudong New District
Postal/ ZIP Code	19087	3001	200123
City/ State	Radnor, PA	Leuven	Shanghai, PRC
Country	USA	Belgium	China
Phone	+1 610-386-1700	+32 16 385 011	+86-21-58986888
Fax		+32 16 385 385	+86-21-58558801
Website URL	www.vwr.com		

3.2. VWR Offices - Europe

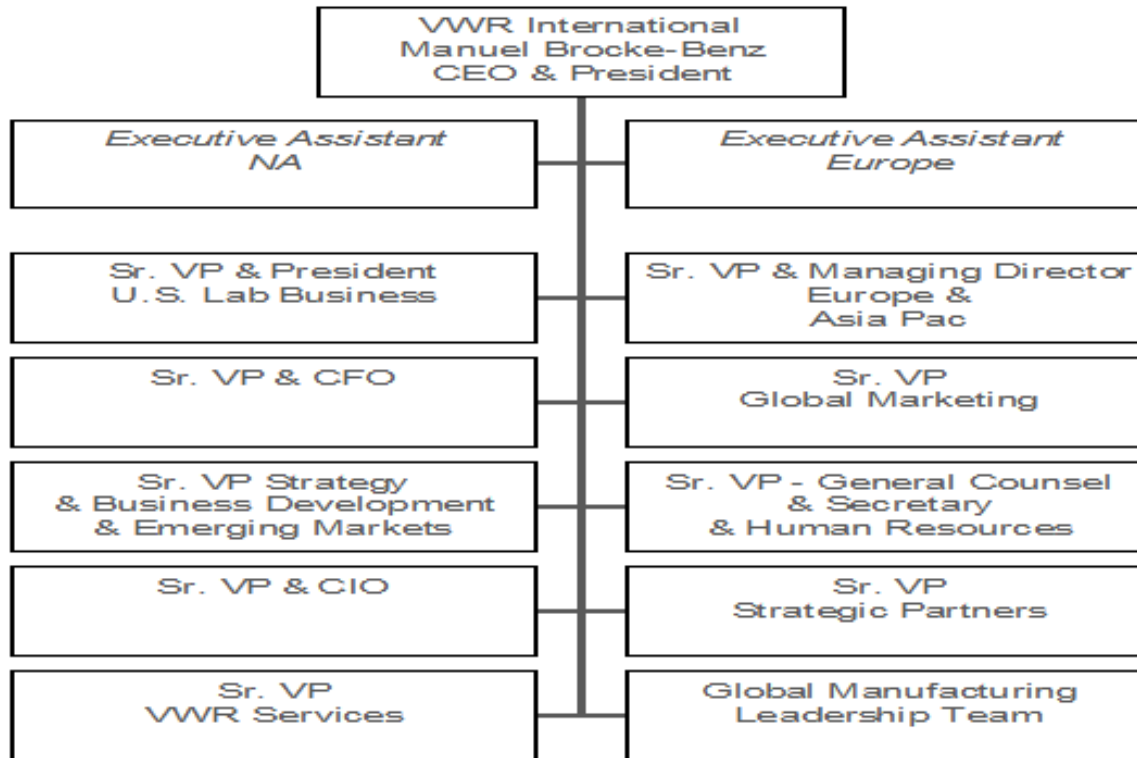
Refer [Appendix \(I\)](#)

[Back to Contents](#)



4. ORGANIZATION CHARTS

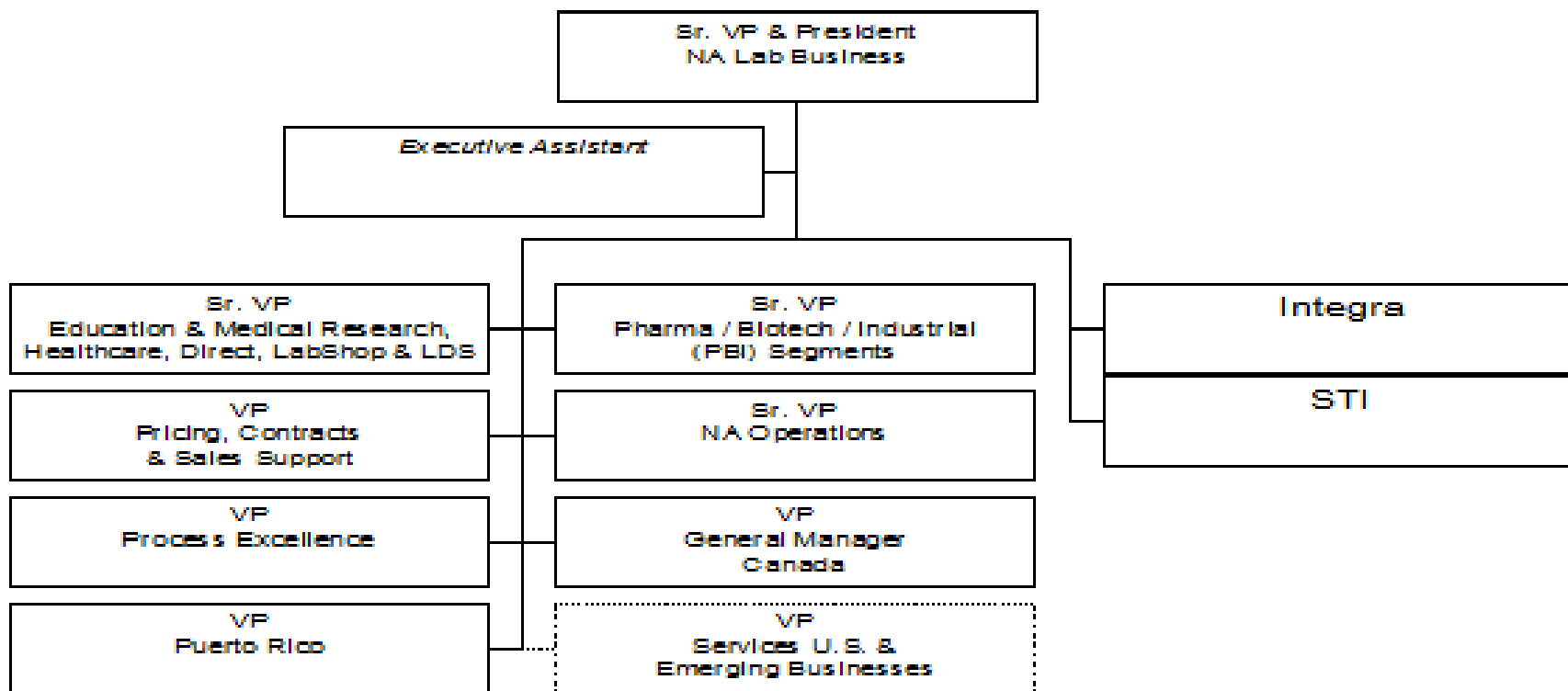
4.1. Executive Organization



[Back to Contents](#)

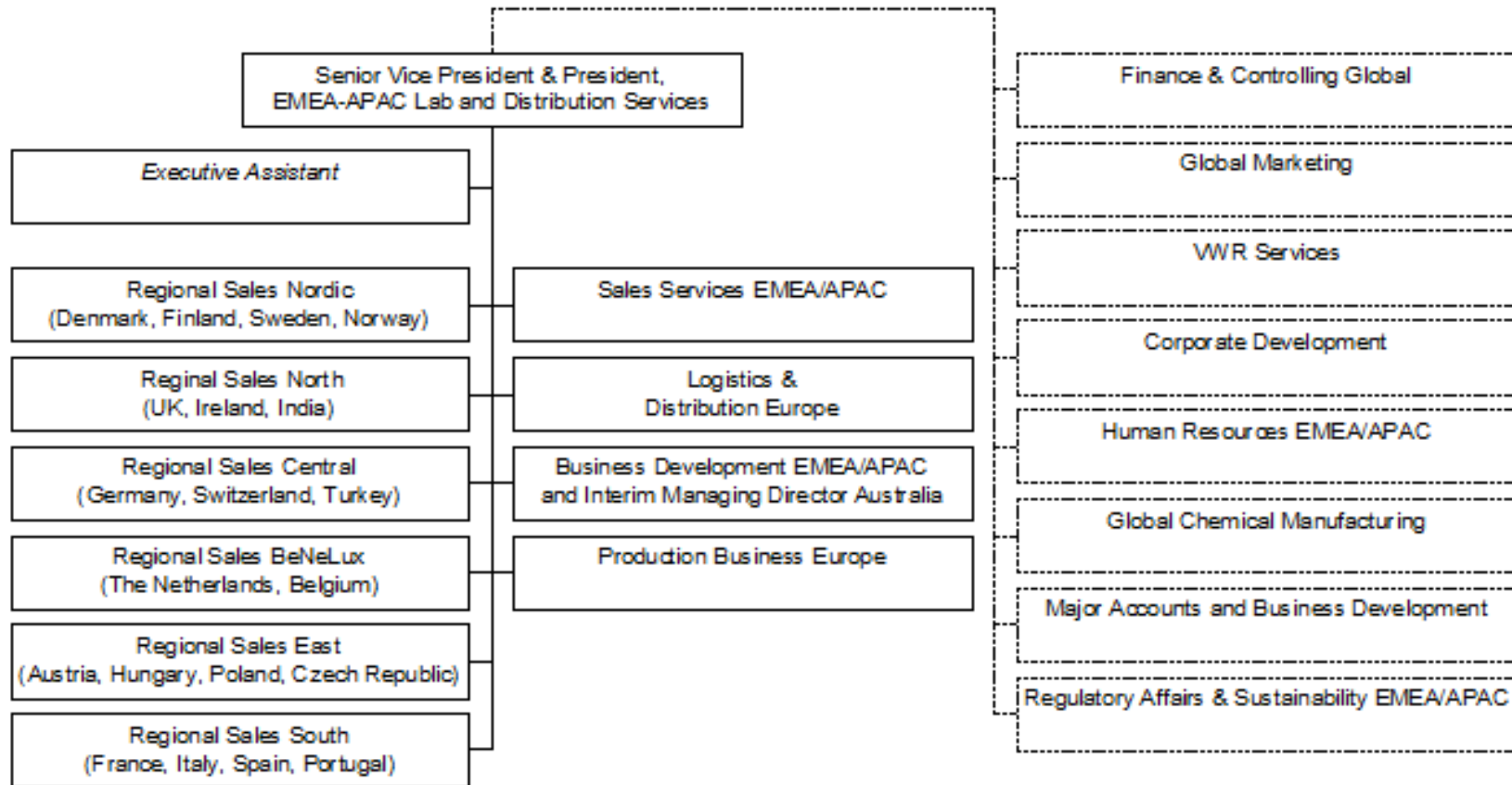


4.2. Americas

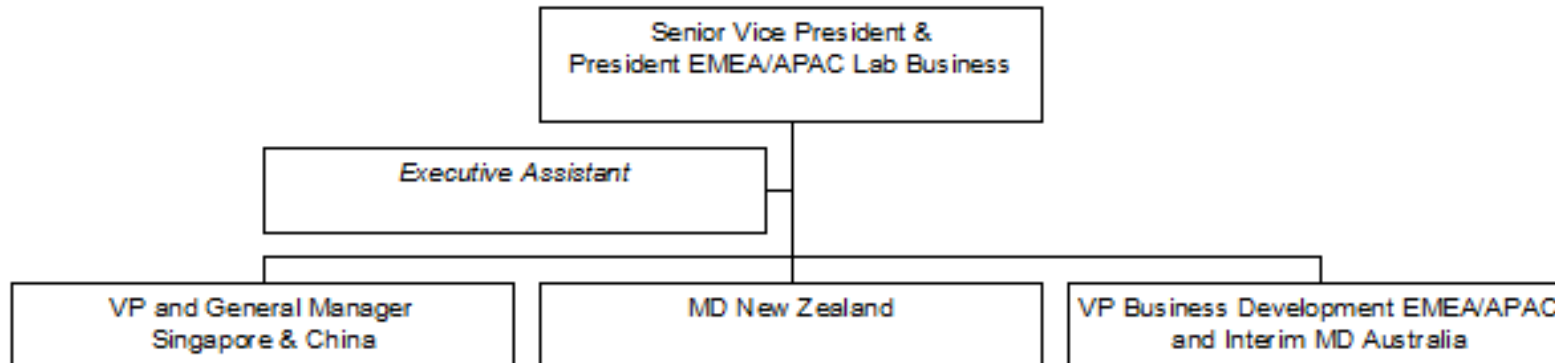


[Back to Contents](#)

4.3. EMEA - APAC



[Back to Contents](#)



[Back to Contents](#)



5. QUALITY SYSTEM

5.1. List of Certifications - Europe

Company	Audit Company	Audit Name	Date of Certification	Valid Until
VWR International Europe bvba, Belgium	Bureau Veritas	ISO 9001:2008	26-Jun-2015	25-Jun-2018
VWR International GmbH, Austria				
VWR International bvba, Belgium				
VWR - Bie & Berntsen, A/S Denmark				
VWR International Oy, Finland				
VWR International SAS, France				
VWR International GmbH, Basan - the cleanroom division of VWR, Germany				
VWR International Kft, Hungary				
VWR International Ltd, Ireland				
VWR International PBI S.r.l., Italy				
VWR International B.V., Netherlands				
VWR International (Northern Ireland) Ltd, Northern Ireland				
VWR International AS, Norway				
VWR International Sp. Z.o.o., Poland				
VWR International – Material de Laboratório, Lda, Portugal				
VWR International Eurolab S.L., Spain				
VWR International AB, Sweden				
VWR International GmbH, Switzerland				
VWR International Ltd, Basan - the cleanroom division of VWR, Lab3 Service, United Kingdom				



Company	Audit Company	Audit Name	Date of Certification	Valid Until
VWR International Europe bvba, Belgium	Bureau Veritas	ISO 14001:2004	26-Jun-2015	25-Jun-2018
VWR International GmbH Austria				
VWR International bvba, Belgium				
VWR - Bie & Berntsen, A/S Denmark				
VWR International Oy, Finland				
VWR International SAS, France				
VWR International GmbH, Basan - the cleanroom division of VWR, Germany				
VWR International Kft, Hungary				
VWR International Ltd, Ireland				
VWR International PBI S.r.l., Italy				
VWR International B.V., Netherlands				
VWR International (Northern Ireland) Ltd, Northern Ireland				
VWR International AS, Norway				
VWR International – Material de Laboratório, Lda, Portugal				
VWR International Eurolab S.L., Spain				
VWR International AB, Sweden				
VWR International Ltd, United Kingdom				



Company	Audit Company	Audit Name	Date of Certification	Valid Until
VWR International Europe bvba, Belgium	Bureau Veritas	OHSAS18001:2007	26-Jun-2015	25-Jun-2018
VWR International GmbH Austria				
VWR International bvba, Belgium				
VWR - Bie & Berntsen, A/S Denmark				
VWR International Oy, Finland				
VWR International SAS, France				
VWR International GmbH, Basan - the cleanroom division of VWR, Germany				
VWR International Kft, Hungary				
VWR International Ltd, Ireland				
VWR International PBI S.r.l., Italy				
VWR International B.V., Netherlands				
VWR International (Northern Ireland) Ltd, Northern Ireland				
VWR International AS, Norway				
VWR International – Material de Laboratório, Lda, Portugal				
VWR International Eurolab S.L., Spain				
VWR International AB, Sweden				
VWR International Ltd, United Kingdom				
VWR - Bie & Berntsen, A/S Denmark	DANAK	EN ISO/IEC 17025:2005 Calibration laboratory	16-Jun-2015	31-Mar-2020
VWR International Ltd, Ireland	Irish National Accreditation Board	EN ISO/IEC 17025:2005 Calibration laboratory	29-Jun-2011	29-Jun-16
VWR International Ltd, Ireland	Irish National Accreditation Board	EN ISO/IEC 17025:2005 Testing laboratory	29-Jun-2011	29-Jun-16
VWR Technical Service, Netherlands	Dutch Accreditation Council RvA	EN ISO/IEC 17025:2005 Calibration laboratory	27-May-2015	01-Jun-2019



VWR International, Fontenay-sous-Bois, France Briare, France	Bureau Veritas	EN ISO 13485:2003	11-Jun-2015	10-Jun-2018
VWR International bvba, Gavere, Belgium	Bureau Veritas	EN ISO 13485:2003	11-Jun-2015	10-Jun-2018

The certificates listed in the above table are available at our website www.vwr.com.

[Back to Contents](#)

5.2. European Quality, Environmental, Health, Safety & Security Policy

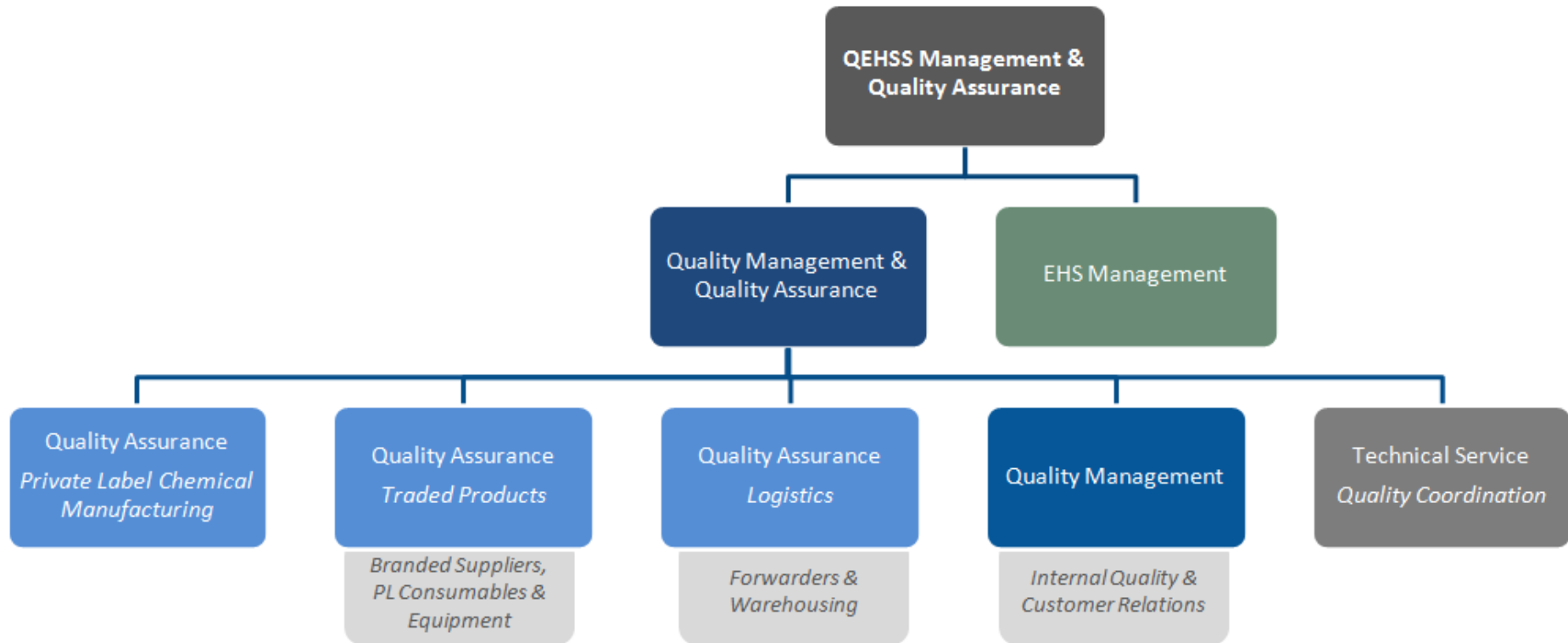
Objectives and Targets

With regard to its overall QEHS&S objectives and targets, VWR will:

- Comply with the requirements of relevant legislation and regulations
- Incorporate appropriate quality, environmental, health, safety and security criteria and factors into business decisions
- Develop management processes and operational procedures aimed at preventing pollution and incidents, and continuously improving quality, environmental, health, safety and security performance
- Commit to highest possible safety standards to prevent injury and ill health by
 - Managing safety as key element of our day to day business
 - Reducing the total number of reportable incidents
 - Reducing the total number of days away from work
 - Tending to zero reportable incident
 - Taking actions to prevent risks (safety campaigns « feedback on safety », safety tours, safety meetings ...).
- Commit to continuous improvement by
 - carrying out the environmental and safety action plans
 - analyzing near-misses and reportable incidents.
- Control the consumption of raw materials (paper, water, packaging and energy).
- Reduce CO₂ emissions from the fleet of company cars and our carriers.
- Avoid and minimize wastes as far as possible and ensure all waste is managed, treated and disposed of in an environmentally acceptable manner.
- Conduct on-site audits to ensure operations are in compliance with QEHS&S management requirements.
- Provide appropriate levels of training and support to management and employees to ensure they are able to fulfill QEHS&S management requirements.
- Work with major suppliers, contractors and customers to help facilitate their QEHS&S performance improvement.
- Communicate VWR's QEHS&S policy to all subcontractors to make them aware of their individual obligations.
- Make known to the public VWR's quality, environmental, health, safety policy.
- Ensure appropriate resources are available to fully implement policy and continuously review the policy's relevance with respect to legal and business developments.

[Back to Contents](#)

5.3. European Structure - QEHSS & Quality Assurance





5.4. Quality, Environmental, Health, Safety Management

Do you have a system in place for handling customer complaints?	Yes <input checked="" type="checkbox"/> / No <input type="checkbox"/>
Do you have a formal written recall / withdrawal process in place?	Yes <input checked="" type="checkbox"/> / No <input type="checkbox"/>
Would you have any objection to us visiting your storage facilities?	Yes <input type="checkbox"/> / No <input checked="" type="checkbox"/>
<p>Comment: visits can be arranged by mutual agreement on purpose and time of visit. VWR International bvba at all times holds the right to refuse a visit.</p>	

[Back to Contents](#)



6.PRIVATE LABEL CHEMICALS MANUFACTURING

6.1. Private Label Chemical Manufacturing Quality System	
Do you have Quality Control policies and procedures?	Yes <input checked="" type="checkbox"/> / No <input type="checkbox"/>
Is Quality Control (QC) independent of Manufacturing?	Yes <input checked="" type="checkbox"/> / No <input type="checkbox"/>
Are records kept of all samples that are submitted to the laboratories?	Yes <input checked="" type="checkbox"/> / No <input type="checkbox"/>
If so, do these records include the following:	
• Date sample received?	Yes <input checked="" type="checkbox"/> / No <input type="checkbox"/>
• Identity of samples?	Yes <input checked="" type="checkbox"/> / No <input type="checkbox"/>
• Results of testing?	Yes <input checked="" type="checkbox"/> / No <input type="checkbox"/>
• Date sample taken?	Yes <input checked="" type="checkbox"/> / No <input type="checkbox"/>
Are there formal written procedures for all performed tests?	Yes <input checked="" type="checkbox"/> / No <input type="checkbox"/>
Are the analytical methods validated? Note : All methods for Pharma products are validated	Yes <input checked="" type="checkbox"/> / No <input type="checkbox"/>
Are control samples routinely run with assays?	Yes <input checked="" type="checkbox"/> / No <input type="checkbox"/>
Are analytical calculations checked by a second person?	Yes <input checked="" type="checkbox"/> / No <input type="checkbox"/>
Is trend analysis on analytical results performed?	Yes <input checked="" type="checkbox"/> / No <input type="checkbox"/>
Are the results of reference standard testing maintained on file?	Yes <input checked="" type="checkbox"/> / No <input type="checkbox"/>
Is there a procedure for documenting and investigating out-of-specification results?	Yes <input checked="" type="checkbox"/> / No <input type="checkbox"/>
Are contract laboratories used?	Yes <input checked="" type="checkbox"/> / No <input type="checkbox"/>
Are these contract laboratories qualified or evaluated?	Yes <input checked="" type="checkbox"/> / No <input type="checkbox"/>
What types of testing is contracted out? Answer – Would depend on product (microbiology, ...)	
Is Method Qualification for all assays used in Testing of Samples?	Yes <input checked="" type="checkbox"/> / No <input type="checkbox"/>
Do you have a testing reagents and standards controls policy / procedure in place?	Yes <input checked="" type="checkbox"/> / No <input type="checkbox"/>
Do you have sample retention program? ➤ Only for Pharma grade products & custom made products	Yes <input checked="" type="checkbox"/> / No <input type="checkbox"/>
Is there a Out-of-Specification (OOS) / Retest Procedure?	Yes <input checked="" type="checkbox"/> / No <input type="checkbox"/>
Are there calibration policies and procedures available?	Yes <input checked="" type="checkbox"/> / No <input type="checkbox"/>
Do you have Manufacturing/QC Procedures?	Yes <input checked="" type="checkbox"/> / No <input type="checkbox"/>
Is there a product traceability procedure? ➤ Using SAP R/3 System (ERP)	Yes <input checked="" type="checkbox"/> / No <input type="checkbox"/>



6.2. Packaging / Labelling System

Do you perform labelling of intermediate / final products?	Yes <input checked="" type="checkbox"/> / No <input type="checkbox"/>
Do you store intermediate / final products?	Yes <input checked="" type="checkbox"/> / No <input type="checkbox"/>
Is there a product / sample shipping validation program? ➤ At Central Distribution Centers	Yes <input checked="" type="checkbox"/> / No <input type="checkbox"/>
Is there a packaging control procedure?	Yes <input checked="" type="checkbox"/> / No <input type="checkbox"/>
Is there a label printing control procedure?	Yes <input checked="" type="checkbox"/> / No <input type="checkbox"/>
Is there a preventive maintenance program in place?	Yes <input checked="" type="checkbox"/> / No <input type="checkbox"/>
Are the products bar coded for distribution material handling? Is bar code specification being used? ➤ At Central Distribution Centers	Yes <input checked="" type="checkbox"/> / No <input type="checkbox"/>
Is Radio- Frequency Identification (RFID) technology being employed? ➤ At Central Distribution Centers	Yes <input checked="" type="checkbox"/> / No <input type="checkbox"/>
Are the certified packages testing reports on file?	Yes <input checked="" type="checkbox"/> / No <input type="checkbox"/>

[Back to Contents](#)

6.3. Materials Control System

Is there any kind of material movement into the facility?	Yes <input checked="" type="checkbox"/> / No <input type="checkbox"/>
Do you have an inventory management system?	Yes <input checked="" type="checkbox"/> / No <input type="checkbox"/>
Do you have warehouse management system?	Yes <input checked="" type="checkbox"/> / No <input type="checkbox"/>
Is inspection and testing of incoming materials done?	Yes <input checked="" type="checkbox"/> / No <input type="checkbox"/>
Are there a handling, storage & distribution procedures?	Yes <input checked="" type="checkbox"/> / No <input type="checkbox"/>
Is there a shelf-life studies procedure?	Yes <input checked="" type="checkbox"/> / No <input type="checkbox"/>

[Back to Contents](#)



6.4. Other	
Do you have a Supply Chain management system?	Yes <input checked="" type="checkbox"/> / No <input type="checkbox"/>
Do you perform contract reviews?	Yes <input checked="" type="checkbox"/> / No <input type="checkbox"/>
Is product identification / traceability possible?	Yes <input checked="" type="checkbox"/> / No <input type="checkbox"/>
Is there a purchasing control procedure?	Yes <input checked="" type="checkbox"/> / No <input type="checkbox"/>
Is there an acceptance sampling procedure ?	Yes <input checked="" type="checkbox"/> / No <input type="checkbox"/>
Are inspection, measuring & test equipment qualifications performed?	Yes <input checked="" type="checkbox"/> / No <input type="checkbox"/>

[Back to Contents](#)

6.5. Personnel / Training	
Are there written job descriptions for all personnel?	Yes <input checked="" type="checkbox"/> / No <input type="checkbox"/>
Are there procedures that document how training is performed?	Yes <input checked="" type="checkbox"/> / No <input type="checkbox"/>
Does the training program in place include the following elements?	
<ul style="list-style-type: none"> Formal introduction to regulatory guidance 	Yes <input checked="" type="checkbox"/> / No <input type="checkbox"/>
Is there an employee induction program?	Yes <input checked="" type="checkbox"/> / No <input type="checkbox"/>
Is there specific training dedicated to functional areas?	Yes <input checked="" type="checkbox"/> / No <input type="checkbox"/>
Is a periodic assessment of practical effectiveness performed?	Yes <input checked="" type="checkbox"/> / No <input type="checkbox"/>
Are there periodic refresher training programs for established employees?	Yes <input checked="" type="checkbox"/> / No <input type="checkbox"/>

[Back to Contents](#)



6.6. Facility / Utilities

Are rest and eating areas separate from other areas?	Yes <input checked="" type="checkbox"/> / No <input type="checkbox"/>
Are there defined areas for production operations?	Yes <input checked="" type="checkbox"/> / No <input type="checkbox"/>
Are there defined areas for packaging and labelling operations?	Yes <input checked="" type="checkbox"/> / No <input type="checkbox"/>
Are there specific gowning requirements for areas of increased classification?	Yes <input checked="" type="checkbox"/> / No <input type="checkbox"/>
Are there plant areas with specific air classification systems?	Yes <input checked="" type="checkbox"/> / No <input type="checkbox"/>
Are there documented procedures for microbiological monitoring of environmental conditions for production areas?	Yes <input checked="" type="checkbox"/> / No <input type="checkbox"/>
If so, which of the following are employed?	
<ul style="list-style-type: none"> Active Viable Air Sampling 	Yes <input checked="" type="checkbox"/> / No <input type="checkbox"/>
<ul style="list-style-type: none"> Settle plates 	Yes <input type="checkbox"/> / No <input checked="" type="checkbox"/>
<ul style="list-style-type: none"> Swabs 	Yes <input type="checkbox"/> / No <input checked="" type="checkbox"/>
<ul style="list-style-type: none"> Others, please specify 	Yes <input type="checkbox"/> / No <input checked="" type="checkbox"/>
Are plant supply pipelines identified and labelled?	Yes <input checked="" type="checkbox"/> / No <input type="checkbox"/>
Is the quality of materials used in production monitored?	Yes <input checked="" type="checkbox"/> / No <input type="checkbox"/>
Is the quality of the water used to prepare standards and reagents monitored?	Yes <input checked="" type="checkbox"/> / No <input type="checkbox"/>
Is the quality of the water used during the manufacturing process monitored?	Yes <input checked="" type="checkbox"/> / No <input type="checkbox"/>

[Back to Contents](#)



6.7. Equipment / Instruments

Are there maintenance and preventive maintenance programs for equipment and instruments?	Yes <input checked="" type="checkbox"/> / No <input type="checkbox"/>
Are there written maintenance and calibration procedures for critical equipment?	Yes <input checked="" type="checkbox"/> / No <input type="checkbox"/>
Are these calibrations traceable back to national standards?	Yes <input checked="" type="checkbox"/> / No <input type="checkbox"/>
Are records of calibration as evidence of control retained?	Yes <input checked="" type="checkbox"/> / No <input type="checkbox"/>
Is any of the following services contracted out?	
<ul style="list-style-type: none"> Instrument / equipment calibration 	Yes <input checked="" type="checkbox"/> / No <input type="checkbox"/>
<ul style="list-style-type: none"> Preventive / breakdown maintenance 	Yes <input checked="" type="checkbox"/> / No <input type="checkbox"/>
Do the procedures for the control of inspection and test equipment include provision of the following?	
<ul style="list-style-type: none"> Documentation of the standards that are required to calibrate the equipment / instrument 	Yes <input checked="" type="checkbox"/> / No <input type="checkbox"/>
<ul style="list-style-type: none"> Documentation of all calibration carried out as evidence of control 	Yes <input checked="" type="checkbox"/> / No <input type="checkbox"/>
<ul style="list-style-type: none"> Labelling or marking the calibration status and the date when calibration ends, on the equipment or appropriate storage box 	Yes <input checked="" type="checkbox"/> / No <input type="checkbox"/>
<ul style="list-style-type: none"> Review and re-sentencing of all work approved using equipment that is found to be out of calibration, since the last documented calibration 	Yes <input checked="" type="checkbox"/> / No <input type="checkbox"/>
<ul style="list-style-type: none"> Reviewing and setting different calibration frequencies for equipment based on use 	Yes <input checked="" type="checkbox"/> / No <input type="checkbox"/>
Are policies and procedures on validation (e.g. IQ, OQ, PQ) documented?	Yes <input checked="" type="checkbox"/> / No <input type="checkbox"/>
Are procedures for the validation of all test and measuring equipment / instruments used to demonstrate the conformance of product to the specified requirements documented?	Yes <input checked="" type="checkbox"/> / No <input type="checkbox"/>
Is the Test Equipment traceable to National/International Standards?	Yes <input checked="" type="checkbox"/> / No <input type="checkbox"/>
Are the procedures for Installation, Operation and Process Qualifications & Validation documented?	Yes <input checked="" type="checkbox"/> / No <input type="checkbox"/>
Do you have written Re-validation Procedure?	Yes <input checked="" type="checkbox"/> / No <input type="checkbox"/>
Do you have Software validation Procedure?	Yes <input checked="" type="checkbox"/> / No <input type="checkbox"/>

[Back to Contents](#)



6.8. Materials Control

Is there an approved supplier list?	Yes <input checked="" type="checkbox"/> / No <input type="checkbox"/>
Are there agreements in place with suppliers requiring them to notify VWR of any change in raw material or manufacturing process of the product supplied?	Yes <input checked="" type="checkbox"/> / No <input type="checkbox"/>
Are there written specifications for all incoming raw materials?	Yes <input checked="" type="checkbox"/> / No <input type="checkbox"/>
Is manufacturer's certificate of analysis required for materials concerned?	Yes <input checked="" type="checkbox"/> / No <input type="checkbox"/>
Are Certificate's of Analysis routinely compared against written specifications?	Yes <input checked="" type="checkbox"/> / No <input type="checkbox"/>
Are received materials routinely tested to verify conformance with the supplier certification?	Yes <input checked="" type="checkbox"/> / No <input type="checkbox"/>
Are there procedures for the control of raw materials?	Yes <input checked="" type="checkbox"/> / No <input type="checkbox"/>
Are records that show full traceability of raw materials retained?	Yes <input checked="" type="checkbox"/> / No <input type="checkbox"/>
Are information records for raw materials maintained which include the following:	
• Your lot Identity?	Yes <input checked="" type="checkbox"/> / No <input type="checkbox"/>
• Suppliers Lot No?	Yes <input checked="" type="checkbox"/> / No <input type="checkbox"/>
• Date of Receipt?	Yes <input checked="" type="checkbox"/> / No <input type="checkbox"/>
• Quantity?	Yes <input checked="" type="checkbox"/> / No <input type="checkbox"/>
• Suppliers name?	Yes <input checked="" type="checkbox"/> / No <input type="checkbox"/>
• Shelf Life?	Yes <input checked="" type="checkbox"/> / No <input type="checkbox"/>
• Test Results?	Yes <input checked="" type="checkbox"/> / No <input type="checkbox"/>
• Specification?	Yes <input checked="" type="checkbox"/> / No <input type="checkbox"/>
Are there defined areas for Receipt, Identification, Sampling and Quarantine of incoming materials? ➤ SAP R/3 (ERP) drives quarantine zone	Yes <input checked="" type="checkbox"/> / No <input type="checkbox"/>
Are information records for raw materials maintained?	Yes <input checked="" type="checkbox"/> / No <input type="checkbox"/>
How are the materials issued from stock?	Using FIFO
Are scheduled stock checks being performed?	Yes <input checked="" type="checkbox"/> / No <input type="checkbox"/>
Is there a rework/reprocess policy?	Yes <input checked="" type="checkbox"/> / No <input type="checkbox"/>

[Back to Contents](#)



6.9. Production / Process Control

Is there a batch record for each batch/lot manufactured?	Yes <input checked="" type="checkbox"/> / No <input type="checkbox"/>
Do the batch records include the following information:	
• Description, lot number and quantity of material used	Yes <input checked="" type="checkbox"/> / No <input type="checkbox"/>
• Processing conditions (temperature etc)	Yes <input checked="" type="checkbox"/> / No <input type="checkbox"/>
• Identification of the person who performed a particular step	Yes <input checked="" type="checkbox"/> / No <input type="checkbox"/>
• Results of in-process testing	Yes <input checked="" type="checkbox"/> / No <input type="checkbox"/>
• All deviations from standard conditions	Yes <input checked="" type="checkbox"/> / No <input type="checkbox"/>
• All cleaning operations carried out before & after batch manufacture	Yes <input checked="" type="checkbox"/> / No <input type="checkbox"/>
Are records of use, maintenance for process equipment maintained in order to demonstrate the traceability in batches, product processed and personnel?	Yes <input checked="" type="checkbox"/> / No <input type="checkbox"/>
Are computers used to store records of manufacture, testing, storage or distribution for the product you supply?	Yes <input checked="" type="checkbox"/> / No <input type="checkbox"/>
Do all manufactured products bear identification labels?	Yes <input checked="" type="checkbox"/> / No <input type="checkbox"/>
Is the expiry date defined?	Yes <input checked="" type="checkbox"/> / No <input type="checkbox"/>
Are the storage conditions defined?	Yes <input checked="" type="checkbox"/> / No <input type="checkbox"/>
Are there cleaning procedures in place for each area and piece of equipment / instrument used in production?	Yes <input checked="" type="checkbox"/> / No <input type="checkbox"/>
Is testing or inspection performed between manufacturing stages or processes?	Yes <input checked="" type="checkbox"/> / No <input type="checkbox"/>
How long are the analytical and production records retained?	Shelf life + 1 year
Is Quality Control independent from production?	Yes <input checked="" type="checkbox"/> / No <input type="checkbox"/>
Are deviations and non-conformities investigated, documented and filed?	Yes <input checked="" type="checkbox"/> / No <input type="checkbox"/>
Is a Certificate of Analysis being supplied with each batch? ➤ If applicable	Yes <input checked="" type="checkbox"/> / No <input type="checkbox"/>
Do you maintain Quarantine & Identification of Pre-Inspection and In-Process Material?	Yes <input checked="" type="checkbox"/> / No <input type="checkbox"/>
Do you have Established Inspection/ Testing Program for In-Process/ Final Product?	Yes <input checked="" type="checkbox"/> / No <input type="checkbox"/>

[Back to Contents](#)



7.SOCIAL INFORMATION

Are the employees adequately protected according to the Universal Declaration of Human Rights regarding wages and benefits?	Yes <input checked="" type="checkbox"/> / No <input type="checkbox"/>
Are the employees adequately protected according to the ILO convention regarding working hours, overtime, time-off and holidays?	Yes <input checked="" type="checkbox"/> / No <input type="checkbox"/>
Are the employees adequately protected according to the ILO convention regarding health and safety?	Yes <input checked="" type="checkbox"/> / No <input type="checkbox"/>
Are the employees adequately protected according to the ILO convention on child labour?	Yes <input checked="" type="checkbox"/> / No <input type="checkbox"/>
Are the employees adequately protected according to the ILO convention regarding forced or bonded labour?	Yes <input checked="" type="checkbox"/> / No <input type="checkbox"/>
Are the employees adequately protected according to the ILO convention regarding discrimination?	Yes <input checked="" type="checkbox"/> / No <input type="checkbox"/>
Are all the employees working in the company of their own free will and have an employment contract?	Yes <input checked="" type="checkbox"/> / No <input type="checkbox"/>

[Back to Contents](#)

8.E-COMMERCE

VWR International offers a variety of e-Business solutions including our global web site VWR.COM. Over the years, VWR has integrated its Supply Chain with many customers through various methods. In the industry, most commonly used are HTTP(s) connections with (SAP) XML messages. But VWR also offers a whole range of other methods and languages like cXML, xCBL, flat file, EDIFACT. Transmission methods are HTTP(s), sFTP, SMTP, EDI etc.

8.1. *Global website features*

- Highlights specific core items to users via our 'Shopping List' functionality
- Provides real time pricing and stock availability
- Approval Routing allows orders to be routed to a supervisor/Purchasing/Safety, etc. so orders can be reviewed and approved prior to submission
- Users can create unlimited "shopping lists" or order templates for frequently purchased products, streamlining the ordering process
- Technical information, MSDS, product data, etc. on-line expands information exposure to all end users
- Enriched product content pages for chemicals incl. GHS information
- Practically unlimited search capabilities to assist users in finding product
- Search engine offers 'auto complete' function that suggests relevant real-time category hits for your search criteria
- Order Status and History allows users to re-use previous orders and check on the status of orders that have been placed
- Web based stock room management systems available, scanner operated
- Full OCI, Punch out and Round trip compliant

8.2. *Advantages of Web Ordering*

- Net Prices, Technical Cards, Catalogue Page
- Availability
- Equivalent : if stock 0, if cancelled
- Alphabetical index
- Economic sort
- Job favourites
- Accessories and associated products
- Optimized search (3 clicks)
- Follow-up of the orders
- Copy of the orders, delivery notes, E-invoicing
- Prices on request & Order Request
- Reduced costs

[Back to Contents](#)



European Reach for high-End e-business services



[Back to Contents](#)



9. LOGISTICS

9.1. Package Labelling

Do the chemical shipments from VWR distribution centers have the following on the product label?

➤ Product name?	Yes <input checked="" type="checkbox"/> / No <input type="checkbox"/>
➤ CAS number?	Yes <input checked="" type="checkbox"/> / No <input type="checkbox"/>
➤ Product number?	Yes <input checked="" type="checkbox"/> / No <input type="checkbox"/>
➤ Quantity?	Yes <input checked="" type="checkbox"/> / No <input type="checkbox"/>
Is the VWR master packing list attached to one of the packages on shippable items and within the master carton for packable orders?	Yes <input checked="" type="checkbox"/> / No <input type="checkbox"/>











A 'Colli Content Label' is affixed to each package which provides information on

- Customer Order Reference
- Order Date
- VWR Order Number
- Delivery Note Number
- Article Number
- Article Description
- Quantity
- UN number and Packaging group (if applicable)

[Back to Contents](#)



9.2. Plant – Overview

										
	Briare FRANCE	Bruchsal GERMANY	Leuven BELGIUM	Lutterworth UK	Karlskoga SWEDEN	Llinars del Vallès SPAIN	Milano/Ronc ello ITALY	Dublin IRELAND	Debrecen HUNGARY	Gdansk POLAND
	CDC	CDC	CDC	RDC	RDC	RDC	RDC	RDC	RDC	RDC
Size (sqm)	17,000	18,500	12,000	17,000	11,000	4,000	2,700	4,000	4,500	738
Pallet places	12,000	12,000	12,000	14,500	5,500	1,350	5,000	5,000	700	51
Bin places	44,000	23,000	55,000	42,000	16,000	10,500	15,000	12,000	8,000	1,000
Flammable Storage Capability	<input checked="" type="checkbox"/>	<input checked="" type="checkbox"/>	<input checked="" type="checkbox"/>	<input checked="" type="checkbox"/>	<input checked="" type="checkbox"/>	<input checked="" type="checkbox"/>	<input checked="" type="checkbox"/>	<input checked="" type="checkbox"/>	<input checked="" type="checkbox"/>	<input checked="" type="checkbox"/>
Climate Controlled Storage Capability	<input checked="" type="checkbox"/>	<input checked="" type="checkbox"/>	<input checked="" type="checkbox"/>	<input checked="" type="checkbox"/>	<input checked="" type="checkbox"/>	<input checked="" type="checkbox"/>	<input checked="" type="checkbox"/>	<input checked="" type="checkbox"/>	<input checked="" type="checkbox"/>	<input checked="" type="checkbox"/>
Analytical Test Equipment / Capabilities	<input checked="" type="checkbox"/>		<input checked="" type="checkbox"/>	<input checked="" type="checkbox"/>				<input checked="" type="checkbox"/>		
White Room Area			<input checked="" type="checkbox"/>							
Owned or Leased	Owned	Owned (+)	Owned	Leased	Leased	Leased	(++)	Leased	Leased	Leased

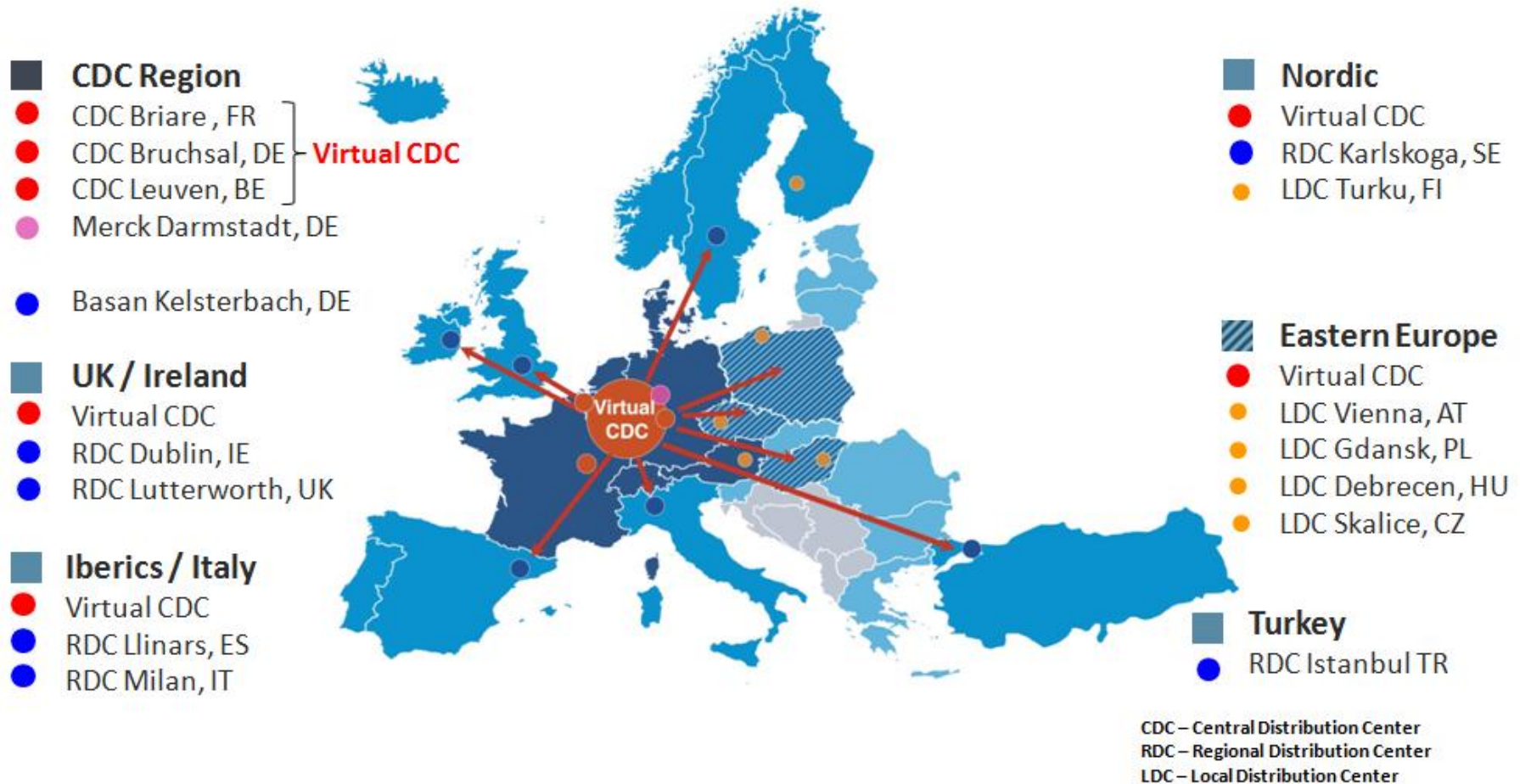
+ One building leased

++ BOMI 2000 – outsourcing company for logistics and distribution for VWR Italy

CDC : Central Distribution Center
RDC : Regional Distribution Center

[Back to Contents](#)

9.3. European Distribution Network



CDC: Central Distribution Centre, RDC: Regional Distribution Centre, LDC: Local Distribution Centre

[Back to Contents](#)



9.4. Standard Lead Time (Local Distribution Centers) - in hours

Departure Distribution Center	Destination Country																		
	Q4 - 2012																		
	NL	BE	GE	FR	AT	CH	DK	IT	ES	PT	HU	PL	CZ	UK	IE	NO	SE	FI	
DE – Darmstadt (Merck)	24	24	24	48	48	48	48	48+	48+	48+	48-72(***)	48-72	48-72	48+	72+ (*)	48+	48+	48+	
DE – Bruchsal	24	24	24	48	48	48	48	48+	48+	48+	48-72(***)	48-72	48-72	48+	72+	48+ (**)	48+ (**)	48+ (**)	
BE – Leuven	24	24	24	48	48	48	48	48+	48+	48+	48-72(***)	48-72	48-72	24+	48+	48+ (***)	48+ (***)	48+ (***)	
FR – Briare	48	24	48	48	72	72	48	48+	48+	48+	48-72(***)	48-72	48-72	48+	72+	48+ (***)	48+ (***)	48+ (***)	
CH – Schlieren						24-48													
IT – Milan								24-72											
ES – Llinars									24-48	24-72									
UK – Lutterworth				144+										24	24+				
IE – Dublin															24				
SE – Karlskoga																24-72	24-72	24-72	
HU – Debrecen											24								
PL – Gdansk												24-48							
CZ – Skalice													24-48						
Delivery Mode									Delivery Times										
	Direct customer deliveries								24	24 hours delivery service to the customer with a cut off time at 12:00									
	Replenishment / X-docking								24-48	24 hours to 48 hours delivery service depending on the region, cut off time 12:00									
	Replenishment via Sea transport / Leadtime depending on transport restrictions								24-72	24 hours to 72 hours delivery service depending on the region, cut off time 12:00									
	Replenishment / X-docking / No daily transport / shipment schedule below								24+ / 48+ / 72+	Lead time to the local warehouse or Hub, local lead time to be included to get complete delivery time									
Schedule:		(*) 1 Container per week			(**) Tue, Wed, Fri			(***) Tue, Thurs											

[Back to Contents](#)



9.5. Logistics Network Structure

CDC	Central Stock Keeping	<ul style="list-style-type: none"> ➤ Broader assortment of stocked items (SKU) ➤ Central inventory for slow moving items (C-lines)
	Supply Chain Optimization	<ul style="list-style-type: none"> ➤ Split of European suppliers into one of the 3 CDC ➤ Concentration of procurement activities ➤ Concentration of inbound flows
	Distribution	<ul style="list-style-type: none"> ➤ Direct customer delivery in the CDC-region in 24/48/72h ➤ France – Benelux – Germany – Austria – Switzerland – Denmark – Poland – Czech Republic ➤ Preparation of shipments for quick cross dock in RDC ➤ Replenishment of RDC for European suppliers ➤ 2/3 of European Delivery lines
RDC		<ul style="list-style-type: none"> ➤ Supply for local assortment ➤ Distribution in RDC-region in 24/48h ➤ 1/3 of European Delivery lines

[Back to Contents](#)

9.6. Freight and Billing Options

Which of the following invoicing options are available?	
• Paper Consolidated Billing	Yes <input checked="" type="checkbox"/> / No <input type="checkbox"/>
• E-Invoicing	Yes <input checked="" type="checkbox"/> / No <input type="checkbox"/>
• EDI Invoicing	Yes <input checked="" type="checkbox"/> / No <input type="checkbox"/>
• Traditional Paper Invoicing	Yes <input checked="" type="checkbox"/> / No <input type="checkbox"/>
• E-mail Invoicing	Yes <input checked="" type="checkbox"/> / No <input type="checkbox"/>

[Back to Contents](#)



APPENDIX (I) – VWR Offices EU

T =Telephone; F= Fax

COUNTRY	COMPANY NAME	CITY	ADDRESS	CONTACT DETAILS		Country HQ	Sales Office	Technical Service Center	Distribution Center	Production	
				T	F						
AUSTRIA	VWR International GmbH	Wien	Graumanngasse 7 A-1150 Wien	T	+43-1-97-002-600	<input checked="" type="checkbox"/>	<input checked="" type="checkbox"/>	<input checked="" type="checkbox"/>			
				F	+43-1-97-002-0						
	VWR International GmbH	Wien	Zimbagasse5 1147 Wien	T	+43-1-97-002-600				<input checked="" type="checkbox"/>		
				F	+43-1-97002-757						
BELGIUM	VWR International bvba	Leuven	Researchpark Haasrode 2020, Geldenaaksebaan 464 B-3001 Leuven	T	+32-1-638-50-11	<input checked="" type="checkbox"/>	<input checked="" type="checkbox"/>	<input checked="" type="checkbox"/>	<input checked="" type="checkbox"/>	<input checked="" type="checkbox"/>	
				F	+32-1-638-53-85						
	<i>* VWR International Europe bvba – shares the contact details mentioned above</i>										
	VWR International bvba, Site Switch	Gavere	Legen Heirweg 20D B-9890 Gavere	T	+32-9-328-67-11						<input checked="" type="checkbox"/>
F				+32-9-328-67-37							
CZECH REPUBLIC	VWR International s.r.o.	Skalice	Pražská 442 CZ-281 67 Skalice	T	+420 321 570 325	<input checked="" type="checkbox"/>	<input checked="" type="checkbox"/>	<input checked="" type="checkbox"/>			
				F	+420 321 570 320						
	VWR International s.r.o.	Roznov pod Radhostem	Pivovarska 30 CZ-756 61, Roznov pod Radhostem	T	+420 571 116 700		<input checked="" type="checkbox"/>				
				F	+420 571 116 717						
DENMARK	VWR - Bie & Berntsen AS	Herlev	Transformervej 8, DK-2730 Herlev	T	+45-4386-8788	<input checked="" type="checkbox"/>	<input checked="" type="checkbox"/>	<input checked="" type="checkbox"/>			
				F	+45-4386-8790						
FINLAND	VWR International Oy	Helsinki	Valimotie 9 FI-00380 Helsinki	T	+358-9-804-551	<input checked="" type="checkbox"/>	<input checked="" type="checkbox"/>	<input checked="" type="checkbox"/>			
				F	+358-9-804-55-200						
FRANCE	VWR International S.A.S.	Briare-le-Canal	ZI de Vaugereau - Chemin de la Croix Saint Marc F-45250 Briare-le-Canal	T	+33 2 38 37 36 35				<input checked="" type="checkbox"/>	<input checked="" type="checkbox"/>	
				F	+33 2 38 37 25 92						
	VWR International S.A.S.	Neuilly-sur-Marne	ZI des Chanoux - 62-66 rue Louis Ampère F-93330 Neuilly-sur-Marne	T	+33 1 45 14 85 00				<input checked="" type="checkbox"/>		
				F							
	VWR International S.A.S.	Fontenay-sous-Bois	Le Périgares, bâtiment B - 201 rue Carnot F-94126 Fontenay-sous-Bois cedex	T	+33 1 45 14 85 00	<input checked="" type="checkbox"/>	<input checked="" type="checkbox"/>				
				F							
	VWR International S.A.S.	Pessac	Europarc - 26 avenue Léonard de Vinci F-33608 Pessac cedex	T	+33 1 45 14 85 00		<input checked="" type="checkbox"/>				
				F							
	VWR International S.A.S.	Strasbourg	Parc de la Meinau - 8 rue de la Durance F-67023 Strasbourg cedex 1	T	+33 1 45 14 85 00		<input checked="" type="checkbox"/>				
				F	+33 4 76 55 70 53						



COUNTRY	COMPANY NAME	CITY	ADDRESS		CONTACT DETAILS	Country HQ	Sales Office	Technical Service Center	Distribution Center	Production
FRANCE	VWR International	Seclin	Immeuble l'Épinette, Bâtiment 2 - 2ème Étage 463 rue des Clauwiers F-59113 Seclin	T	+33 1 45 14 89 83		<input checked="" type="checkbox"/>			
				F	+33 1 45 14 87 10					
GERMANY	VWR International GmbH	Bruchsal	Vichystrasse 2 D-76646 Bruchsal	T	+49-7251-717-240				<input checked="" type="checkbox"/>	
				F	+49-7251-717-244					
	VWR International GmbH	Bruchsal	John-Deere-Strasse 5 D-76646 Bruchsal	T	+49-7251-717-0		<input checked="" type="checkbox"/>		<input checked="" type="checkbox"/>	
				F	+49-7251-717-181					
	VWR International GmbH	Bruchsal	John-Deere-Strasse 40 D-76646 Bruchsal	T	+49-7251-717-240				<input checked="" type="checkbox"/>	
				F	+49-7251-717-244					
	VWR International GmbH	Darmstadt	Hilpertstrasse 20A D-64295 Darmstadt	T	+49-6151-3972-0	<input checked="" type="checkbox"/>	<input checked="" type="checkbox"/>	<input checked="" type="checkbox"/>		
				F	+49-6151-3972-450					
	VWR International GmbH	Dresden	Grossenhainer Strasse 99 D-01127 Dresden	T	+49-351-85348-0		<input checked="" type="checkbox"/>			
				F	+49-351-85348-653					
	VWR International GmbH	Hannover	Wöhlerstrasse 42 D-30163 Hannover	T	+49-511-288694-0		<input checked="" type="checkbox"/>			
				F	+49-511-288694-710					
	VWR International GmbH	Ismaning	Lise-Meitner-Strasse 1 D-85737 Ismaning	T	+49-89-996548-0		<input checked="" type="checkbox"/>			
				F	+49-89-996548-291					
	VWR International GmbH	Langenfeld	Bahnhofstrasse 35 D-40764 Langenfeld	T	+49-2173-3942-0		<input checked="" type="checkbox"/>			
				F	+49-2173-3942-300					
VWR International GmbH	Nuernberg	Neuburger Strasse 26 D-90451 Nuernberg	T	+49-911-81730-0		<input checked="" type="checkbox"/>				
			F	+49-911-81730-58						
VWR International GmbH	Ulm	James-Franck-Ring 9 D-89081 Ulm	T	+49-731-95449-0		<input checked="" type="checkbox"/>				
			F	+49-731-95449-50						
basan the cleanroom division of VWR	Kelsterbach	Donaustrasse 1 D-65451 Kelsterbach	T	+49 6107-9008-500		<input checked="" type="checkbox"/>		<input checked="" type="checkbox"/>		
			F	+49 6107-9008-509						
HUNGARY	VWR International Kft.	Debrecen	Simon László utca 4. HU-4034 Debrecen	T	+36-52-521-130	<input checked="" type="checkbox"/>	<input checked="" type="checkbox"/>	<input checked="" type="checkbox"/>		
				F	+36-52-470-069					
IRELAND	VWR International Ltd	Dublin 15	Orion Business Campus, Northwest Business Park, Ballycoolin, Blanchardstown Dublin 15	T	+353-1-88-22-222	<input checked="" type="checkbox"/>	<input checked="" type="checkbox"/>	<input checked="" type="checkbox"/>	<input checked="" type="checkbox"/>	
				F	+353-1-88-22-333					
NOTHERN IRELAND	VWR International (Northern Ireland) Ltd	Derry	19 Clarendon Street Derry, BT48 7EP	T	+44 28 9058 5800		<input checked="" type="checkbox"/>			
				F	+44 28 9080 7812					



COUNTRY	COMPANY NAME	CITY	ADDRESS		CONTACT DETAILS	Country HQ	Sales Office	Technical Service Center	Distribution Center	Production
ITALY	VWR International PBI s.r.l.	Milano	Via San Giusto 85 I-20153 Milano	T	+39-02-33 20 31 1	<input checked="" type="checkbox"/>	<input checked="" type="checkbox"/>	<input checked="" type="checkbox"/>		
				F	+39-02-33 20 31 307					
	Basan Italy S.r.l.	Milano	Via San Giusto 85 I-20153 Milano	T	+39-02-33 20 31 1		<input checked="" type="checkbox"/>			
				F	+39-02-33 20 31 307					
NETHERLANDS	VWR International BV	Amsterdam	Basisweg 34 NL-1043AP Amsterdam	T	+31-20-4808 400	<input checked="" type="checkbox"/>	<input checked="" type="checkbox"/>			
				F	+31-20-4808-480					
	VWR Technical Service	Boxmeer	Heinz Moormanstraat 4 NL-5831AS Boxmeer	T	+31-485-561 626			<input checked="" type="checkbox"/>		
				F	+31-485-561-620					
	VWR International BV	Breda	Minervum 7439 E-F NL-4817ZG Breda	T	+31-76-5 795 795		<input checked="" type="checkbox"/>			
				F	+31-76-5876 236					
	Basan - the cleanroom division of VWR	Breda	Minervum 7439 E-F NL-4817 ZG Breda	T	+31 76 57 22660		<input checked="" type="checkbox"/>			
				F	+31 76 57 22661					
NORWAY	VWR International AS	Bergen	Conrad Mohrsvei 11 N-5822 Bergen	T	+47-02290		<input checked="" type="checkbox"/>			
				F	+47-55-362760					
	VWR International AS	Oslo	Haavard Martinsens vei 30 N-0978 Oslo	T	+47-02290	<input checked="" type="checkbox"/>	<input checked="" type="checkbox"/>	<input checked="" type="checkbox"/>		
				F	+47-022-900040					
	VWR International AS	Trondheim	Leirfossvegen 27 N-7038 Trondheim	T	+47-02290		<input checked="" type="checkbox"/>			
				F	+47-73-825290					
	VWR International AS	Tromsø	PO Box 2044 (Sjølundvegen 3) N-9265 Tromsø	T	+47-02290		<input checked="" type="checkbox"/>			
				F	+47-77-602640					
PORTUGAL	VWR International Material de Laboratório, Lda	Carnaxide	Edifício Neopark, Av. Tomás Ribeiro, 43- 3 D P-2790-211 Carnaxide	T	+351-213600770	<input checked="" type="checkbox"/>	<input checked="" type="checkbox"/>	<input checked="" type="checkbox"/>		
				F	+351-213600798					
	VWR International Material de Laboratório, Lda	Vila Nova de Gaia	Rua Rei Ramiro, 870-3 F P-4400-281 Vila Nova de Gaia	T	+351-223741360		<input checked="" type="checkbox"/>			
				F	+351-223741369					
POLAND	VWR International Sp. Z.o.o.	Gdansk	ul. Limbowa 5, PL-80-175 Gdansk,	T	+48-58 323 82 00 to 04	<input checked="" type="checkbox"/>	<input checked="" type="checkbox"/>			
				F	+48-58 323 82 05					
	VWR International Sp. Z.o.o.	Krakow	Grzegorzeczka, PL-31 - 559 Krakow	T	+48-12 421 16 80 & 86		<input checked="" type="checkbox"/>			
				F	+48-12 429 68 89					
	VWR International Sp. Z.o.o.	Warszawa	Karola Miarki 11D, PL-01-496 Warszawa	T	+48-22 861 50 37 & 38		<input checked="" type="checkbox"/>			
				F	+48-22 861 51 14 & 52 16					



COUNTRY	COMPANY NAME	CITY	ADDRESS		CONTACT DETAILS	Country HQ	Sales Office	Technical Service Center	Distribution Center	Production
POLAND	VWR International Sp. Z.o.o.	Sudecka	Ul. Sudecka 74 PL-53 - 129 Wroclaw	T	+48-71 783 29 90 & 91		<input checked="" type="checkbox"/>			
				F	+48-71 783 29 92					
SLOVAKIA	VWR International s.r.o.	Bratislava	Prievozska 6 SK- 821 09 Bratislava	T	+421 2 326 038 31	<input checked="" type="checkbox"/>	<input checked="" type="checkbox"/>			
				F	+421 2 326 038 34					
SPAIN	VWR International Eurolab, S.L.	Llinars del Vallès (Barcelona)	C/ De la Tecnologia 5 -17 A7 – Llinars Park E-08450 Llinars del Vallès (Barcelona)	T	+34-938 642 900	<input checked="" type="checkbox"/>	<input checked="" type="checkbox"/>	<input checked="" type="checkbox"/>	<input checked="" type="checkbox"/>	
				F	+34-902 430 657					
	VWR International Eurolab, S.L.	Madrid	Gral. Martínez Campos, nº 41 4º D E-28010 Madrid	T	+34-91-319.69.22		<input checked="" type="checkbox"/>			
				F	+34-91-310.02.82					
SWEDEN	VWR International AB	Göteborg	Varbergsgatan 2 SE-412 65 Göteborg	T	+46-3-175-83900		<input checked="" type="checkbox"/>			
				F	+46-3-121-4425					
	VWR International AB	Karlskoga	Gjuterigatan 3 (Bofors Industriområde) SE-69150 Karlskoga	T	+46-5-868-4857		<input checked="" type="checkbox"/>		<input checked="" type="checkbox"/>	
				F	+46-5-868-4879					
	VWR International AB	Lund	Skiffervägen 12 SE-22478 Lund	T	+46-4-628-93950		<input checked="" type="checkbox"/>			
				F	+46-4-621-11431					
	VWR International AB	Stockholm	Fagerstagatan 18A** SE-16394 Stockholm	T	+46-8-621-3400	<input checked="" type="checkbox"/>	<input checked="" type="checkbox"/>	<input checked="" type="checkbox"/>		
				F	+46-8-621-3466					
** Fagerstagatan 18A - is not used as postal address.										
SWITZERLAND	VWR International GmbH	Dietikon	Lerzenstrasse 16/18 CH-8953 Dietikon	T	+41-44-745-1313	<input checked="" type="checkbox"/>	<input checked="" type="checkbox"/>	<input checked="" type="checkbox"/>		
				F	+41-44-745-1310					
	VWR International GmbH	Breganzona	Piazza Cinque Vie 1 CH-6932 Breganzona	T	+41-91-935-7500		<input checked="" type="checkbox"/>			
				F	+41-91-935-7509					
	VWR International GmbH	Nyon	Rue Neuve 7 CH-1260 Nyon	T	+41-2-29-94-91-00		<input checked="" type="checkbox"/>			
				F	+41-2-29-94-91-09					
	VWR International GmbH	Schlieren	Grabenstrasse 1 CH-8952 Schlieren	T	+41-44-738-9009			<input checked="" type="checkbox"/>	<input checked="" type="checkbox"/>	
				F	+41-44-738-9002					
UNITED KINGDOM	VWR International Ltd.	Lutterworth, Leicestershire	Hunter Boulevard, Magna Park LE17 4XN Lutterworth, Leicestershire	T	+44-14-55-558600	<input checked="" type="checkbox"/>	<input checked="" type="checkbox"/>		<input checked="" type="checkbox"/>	
				F	+44-14-55-558586					
	Jencons a VWR Division	East Grinstead, West Sussex	Unit 15, The Birches, Willard Way, Imberhorne Industrial Estate, RH19 1XZ East Grinstead, West Sussex	T	+44-1342-337-447			<input checked="" type="checkbox"/>		
				F	+44-1342-337-448					
	VWR & Jencons a VWR Division (***)	Leighton Buzzard	14 Media Village, Liscombe Park, Soulbury LU7 0GA, Leighton Buzzard	T	+44-845-076-6649		<input checked="" type="checkbox"/>			
				F	+44-845-073-6659					



COUNTRY	COMPANY NAME	CITY	ADDRESS		CONTACT DETAILS	Country HQ	Sales Office	Technical Service Center	Distribution Center	Production
UNITED KINGDOM	Lab3 Service	Bristol	1 Dragon Court, Croft end road, St. George BS5 7XX Bristol	T	+44-1179 354-455			<input checked="" type="checkbox"/>		
				F	+44-1179-354-941					
	Basan – the cleanroom division of VWR	Basingstoke	Units 2 & 3 Newton Court RG24 8GF Basingstoke	T	+44-1256-364-711		<input checked="" type="checkbox"/>		<input checked="" type="checkbox"/>	
				F	+44-1256-364-722					
*** Exports										

[Back to Contents](#)